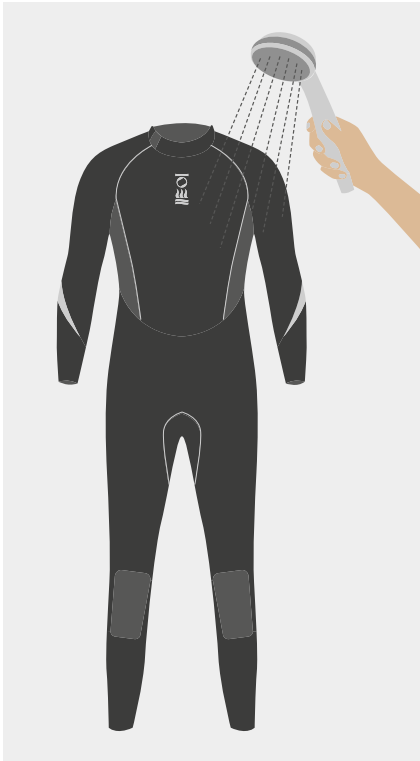
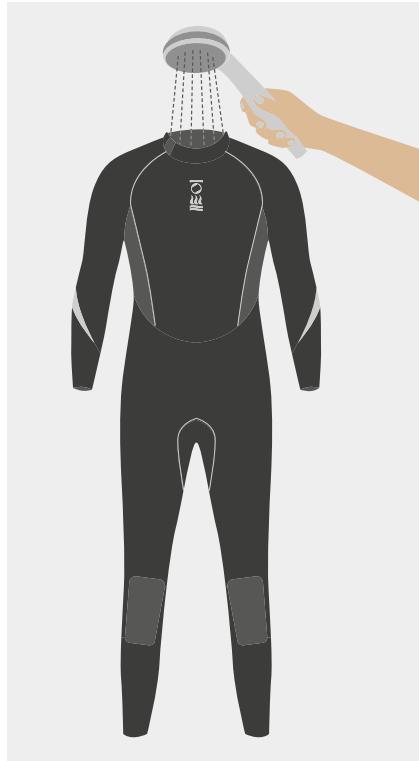


WETSUIT CARE GUIDE

By taking proper care of your wetsuit, you can prolong its life and get the best performance out of it for many years.



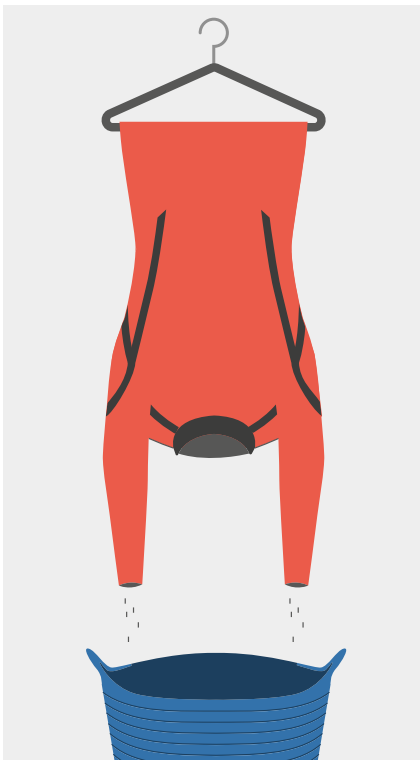
Rinse as soon as possible after each use with cold, fresh water.



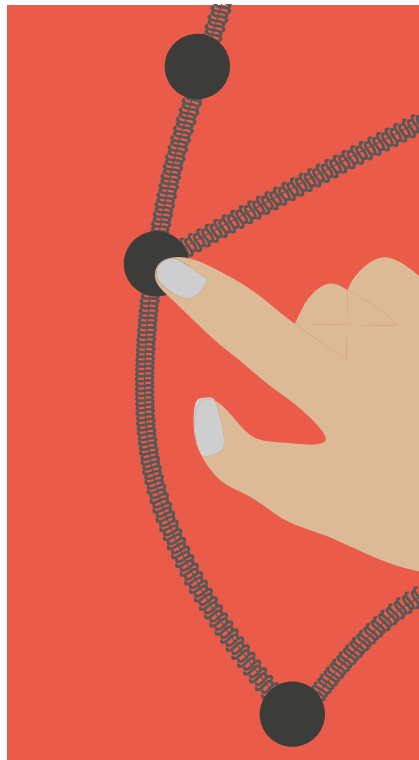
Rinse through the inside too to reduce salt or chlorine build up.



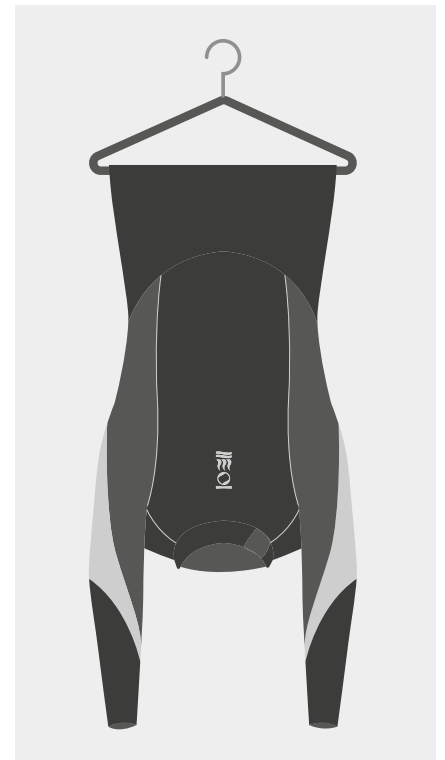
If your wetsuit starts to smell, use a wetsuit shampoo and wash as instructed on bottle.



Dry inside out to avoid odour and mildew build up. Hang over a rail or coat hanger at the waist away from direct sunlight.



Inspect your wetsuit for rips or broken seams and repair where needed with a blind stitch or neoprene patch.



Store flat or hung in half in a temperature controlled environment. Do not hang by neck and shoulders.